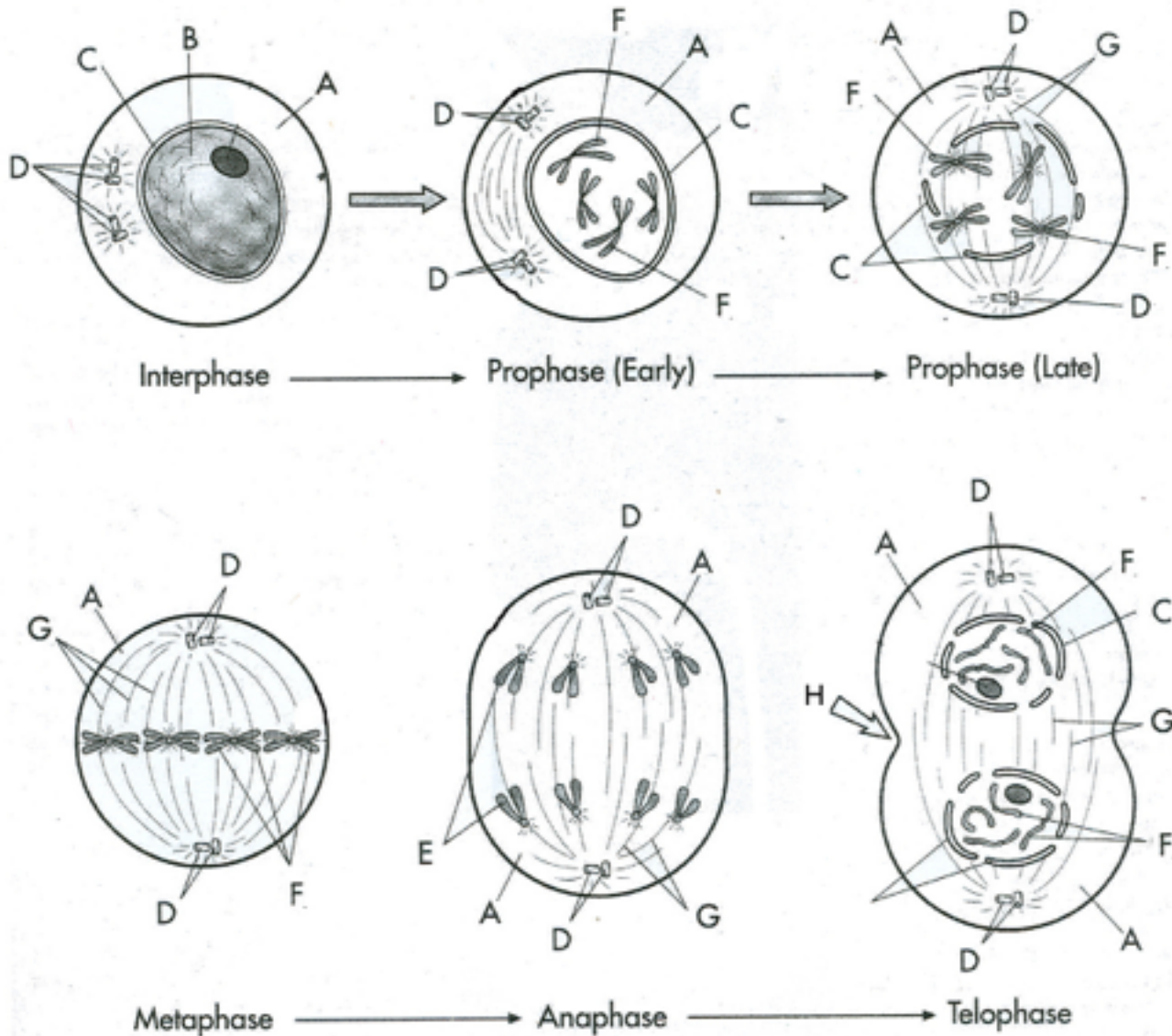


Mitosis Coloring Sheet

Follow the coloring code on the Mitosis Key to color each part of the cell in the six stages of mitosis. Underneath each cell, or on the back of this worksheet, write 2-3 sentences describing what goes on during that stage of mitosis.



○ Cytoplasm	A	-----	White
○ Nucleus	B	-----	Blue
○ Nuclear Membrane	C	-----	Green
○ Centrioles	D	-----	Red
○ Chromatids	E	-----	Yellow
○ Chromosomes	F	-----	Orange
○ Spindle Fibers	G	-----	Purple

Mitosis Coloring Key